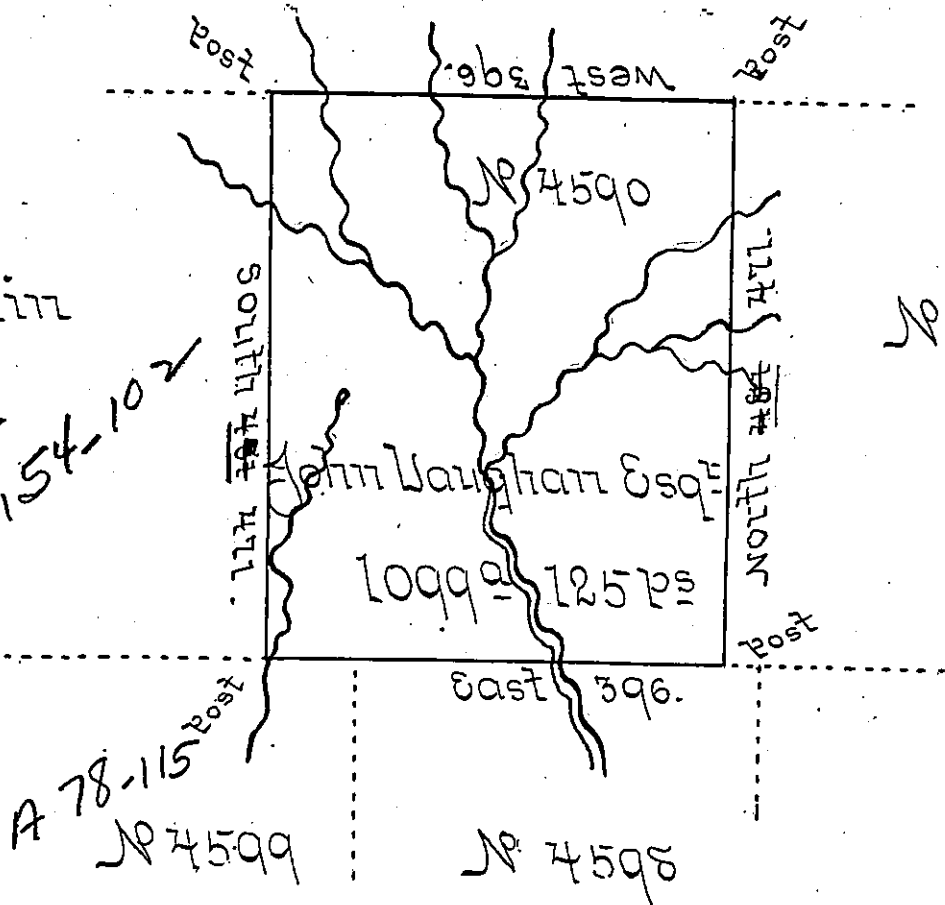


Wm. Henry Esq<sup>r</sup>

Emily Mifflin  
N<sup>o</sup> 4588.

C 154-102

A 78-115  
N<sup>o</sup> 4599



Surveyed the above described Tract of Land on the 17<sup>th</sup> day  
of the 4<sup>th</sup> Month 1794. for John Vaughan Esq<sup>r</sup> in pursuance  
of his Warrant N<sup>o</sup> 4590. dated December 30<sup>th</sup> 1793. &  
situate upon the Waters of Howanda Creek, adjoining  
~~with~~ Emily Mifflin, Wm Henry Esq<sup>r</sup> & his other Lands  
Containing one Thousand & Ninety Nine Acres & one  
Hundred & twenty five pches & the Allowance of six Cent.

William Ellis D.S.

Daniel Brodhead Esq<sup>r</sup> }  
Surveyor General ~ }

IN TESTIMONY that the above is a copy of the original remaining on file in  
the Department of Internal Affairs of Pennsylvania, made  
conformably to an Act of Assembly approved the 16th day of  
February, 1833, I have hereunto set my Hand and caused  
the Seal of said Department to be affixed at Harrisburg,  
this first day of January 1901.

*James W. Fatta*  
Secretary of Internal Affairs.